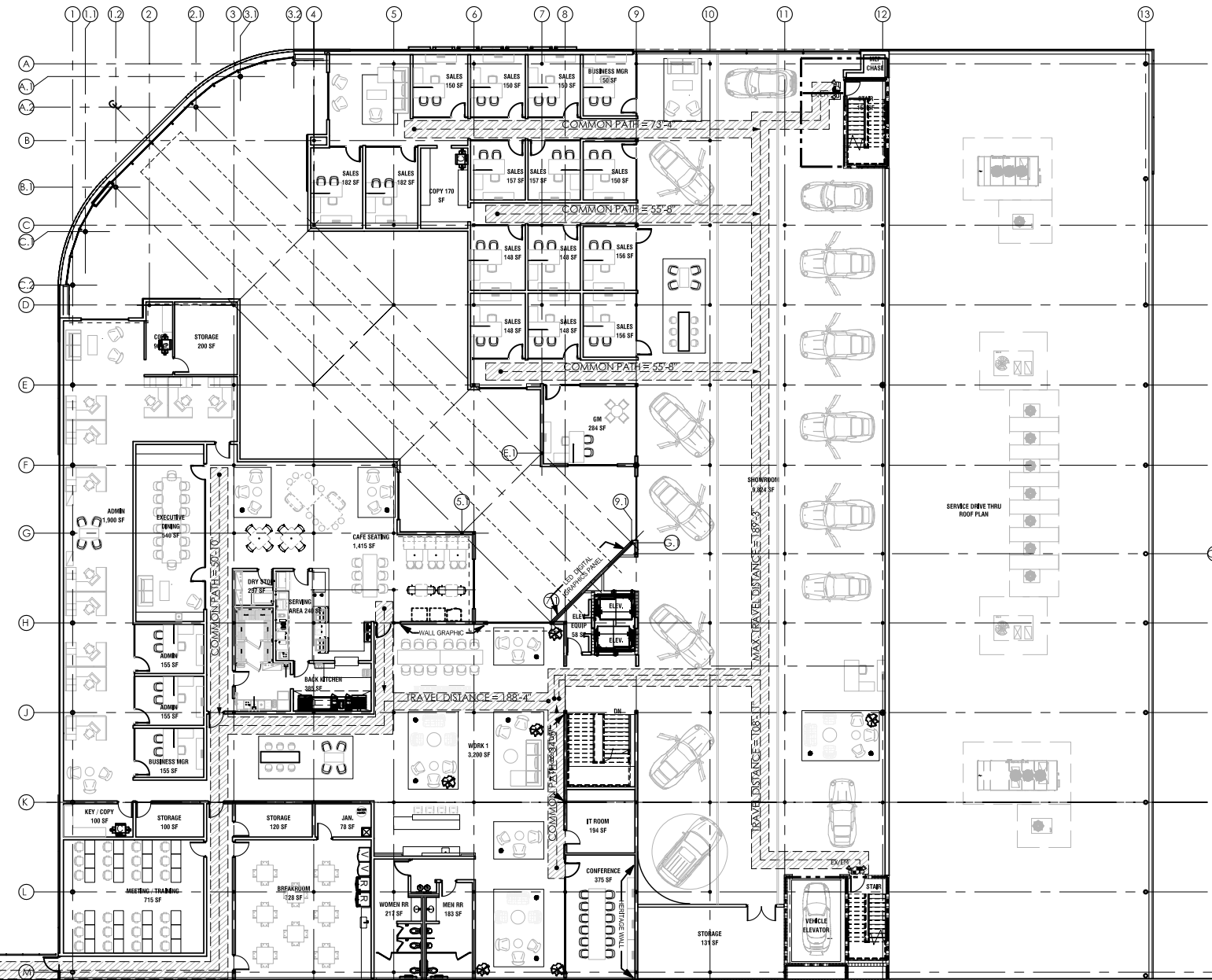
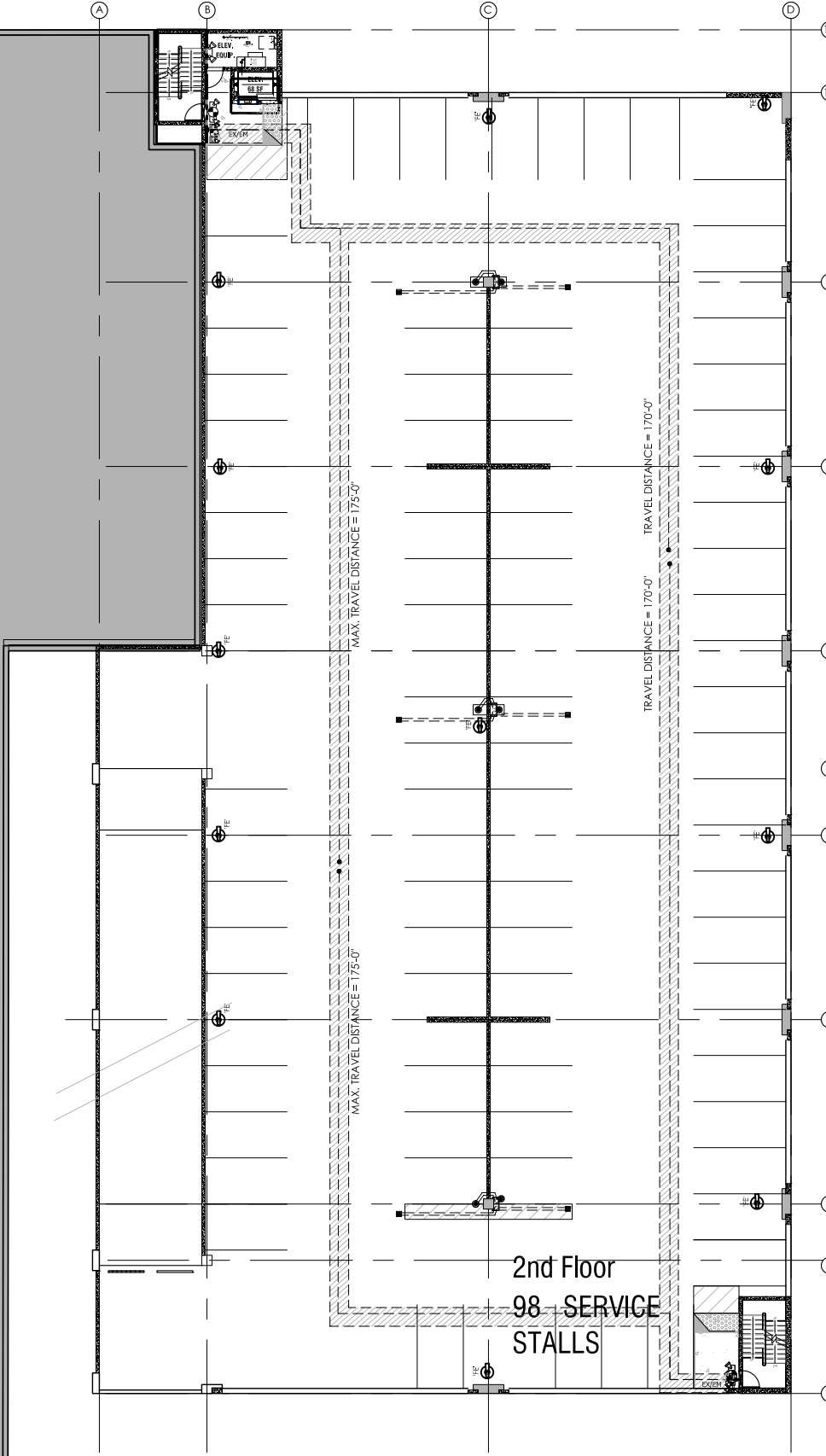


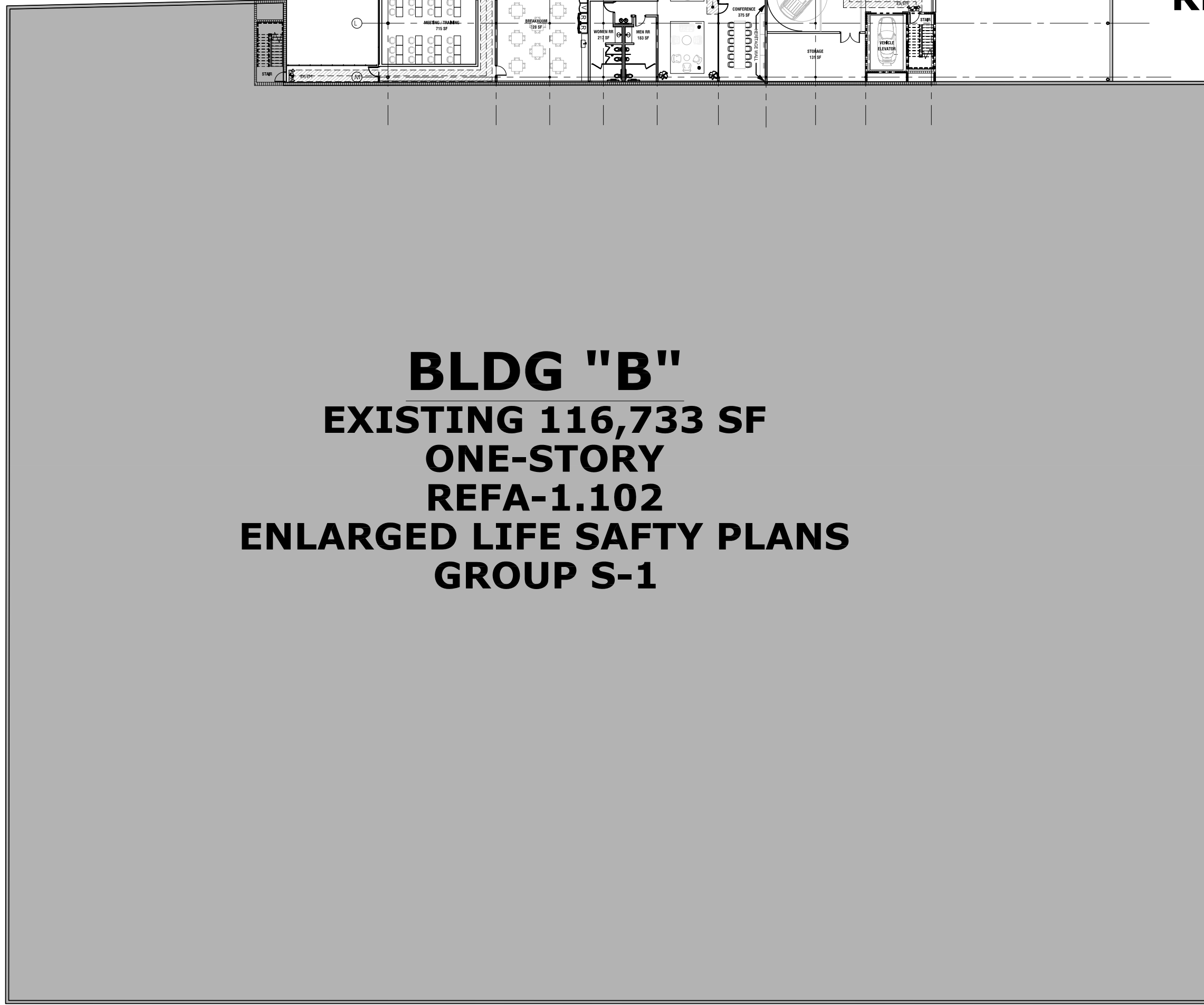
BLDG "A"
PROPOSED TWO-STORY
71,290 SF
AUTOMOTIVE DEALERSHIP
REF A-1.201
ENLARGED LIFE SAFETY PLAN
GROUP B



BLDG "C"
PROPOSED
125,087 SF
FOUR-STORY
PARKING GARAGE
REF A-1.103
REF ENLARGED LIFE SAFETY PLANS
GROUP S-2



BLDG "B"
EXISTING 116,733 SF
ONE-STORY
REFA-1.102
ENLARGED LIFE SAFTY PLANS
GROUP S-1



BLDG."A" NEW 2-STORY GROUPS. B / S-1

1ST FLR:	GROUP "B" MOTOR VEHICLE SHOWROOM/ SALES/OFFICE	33,431 SF
1ST FLR:	GROUP "S-1" SERVICE DRIVE THRU:	9,670 SF
2ND FLR:	GROUP "B" SALES AND OFFICE:	28,189 SF
TOTAL BLDG "A" SALES/ OFFICE AREAS SERVICE DRIVE THRU:		71,290 SF

BLDG."B" RENOVATION 1-STORY
GROUP S-1.SERVICE MAINT.AUTO REPAIR

1ST FLR:	GROUP "S-1" AUTO REPAIR 87 BAYS & ACCESSORY ROOMS:	86,648 SF
1ST FLR:	GROUP "S-1" PARTS DEPT STORAGE	18,508 SF
1ST FLR:	GROUP "S-1" PARTS DEPT RECEIVING	1,100 SF
1ST FLR:	GROUP "S-1" PARTS DEPT SPECIAL TOOLS	2,652 SF
1ST FLR:	GROUP "S-1" (9) RECONDITION BAYS	6,176 SF
1ST FLR:	GROUP "S-1" PHOTO BOOTH	1,649 SF
TOTAL BLDG "B" SERVICE MAINTENANCE AUTO REPAIR/STORAGE		116,733 SF

TOTAL BLDG "A" & "B" GROSS SQUARE FEET = 188,023 GSF
TOTAL BLDG "A" & "B" BUILDING FOOT PRINT = 159,834 GSF

PROPOSED OCCUPANCY BLDG'S "A" AND "B":

BLDG."C" PARKING GARAGE 4-STORY
GROUP S-2. SERVICE & INVENTORY ONLY
PROPOSED SEPARATE BLDG. PERMIT

1ST FLR:	GROUP "S-2" : 84 STALLS SERVICE VEHICLE PARKING:	31,973 SF
2ND FLR:	GROUP "S-2" : 98 STALLS SERVICE VEHICLE PARKING:	31,973 SF
3RD FLR:	GROUP "S-2" : 97 STALLS INVENTORY VEHICLE PARKING:	31,973 SF
4TH FLR:	GROUP "S-2" : 100 STALLS INVENTORY VEHICLE PARKING:	29,168 SF
TOTAL BLDG "C" OPEN AIR PARKING GARAGE		125,087 SF

PROPOSED OCCUPANCY BLDG. "C" PARKING GARAGE:

BLDG."A" NEW 2-STORY GROUPS. B / S-1

1ST FLR:	GROUP "B" MOTOR VEHICLE SHOWROOM/ SALES/OFFICE	33,431 SF/100	334 OCCUPANTS
1ST FLR:	GROUP "S-1" SERVICE DRIVE THRU:	9,670 SF /300	32 OCCUPANTS
2ND FLR:	GROUP "B" SALES AND OFFICE:	28,189 SF/100	282 OCCUPANTS
TOTAL BLDG "A"			648 OCCUPANTS

TOTAL OCCUPANTS BLDG "A" : 648 OCCUPANTS

BLDG."B" RENOVATION 1-STORY
GROUP S-1.SERVICE MAINT.AUTO REPAIR

1ST FLR:	AUTO REPAIR / ACCESSORY ROOMS:	86,648 SF/300	288 OCCUPANTS
1ST FLR:	PARTS DEPT STORAGE	18,508 SF/300	62 OCCUPANTS
1ST FLR:	PARTS DEPT RECEIVING	1,100 SF/300	4 OCCUPANTS
1ST FLR:	PARTS DEPT SPECIAL TOOLS	2,652 SF/300	9 OCCUPANTS
1ST FLR:	(9) RECONDITION BAYS	6,176 SF/300	21 OCCUPANTS
1ST FLR:	PHOTO BOOTH	1,649 SF/300	6 OCCUPANTS
TOTAL BLDG "B" SERVICE MAINTENANCE AUTO REPAIR/STORAGE			116,733 SF

TOTAL BLDG "A" & "B" GROSS SQUARE FEET = 188,023 GSF
TOTAL BLDG "A" & "B" BUILDING FOOT PRINT = 159,834 GSF

TOTAL OCCUPANTS BLDG "B" : 390 OCCUPANTS

BLDG."C" PARKING GARAGE 4-STORY
GROUP S-2. SERVICE & INVENTORY ONLY
PROPOSED SEPARATE BLDG. PERMIT

1ST FLR:	84 STALLS SERVICE VEHICLE PARKING:	31,973 SF /300	106 OCC
2ND FLR:	98 STALLS SERVICE VEHICLE PARKING:	31,973 SF /300	106 OCC
3RD FLR:	97 STALLS INVENTORY VEHICLE PARKING:	31,973 SF	106 OCC
4TH FLR:	100 STALLS INVENTORY VEHICLE PARKING:	29,168 SF/300	97 OCC
TOTAL BLDG "C" OCCUPANTS			415 OCCUPANTS

TOTAL OCCUPANTS BLDG "C" : 415 OCCUPANTS

FIRE SPRINKLERS PROVIDED:	YES
FIRE ALARM PROVIDED:	YES
NUMBER OF MEANS OF EGRESS REQUIRED (per NFPA 30.2.4.1):	(2) PER LEVEL
NUMBER OF MEANS OF EGRESS PROVIDED:	EXCEEDS 2 PER LEVEL
MAXIMUM TRAVEL DISTANCE ALLOWED FOR GROUP B:	300'-0"
MAXIMUM TRAVEL DISTANCE ALLOWED FOR S-1: ORDINARY HAZARD	400'-0"
MAXIMUM TRAVEL DISTANCE ALLOWED FOR S-2: LOW HAZARD	NO LIMIT
MAX. TRAVEL DISTANCE for THIS PROJECT:	237'
MAXIMUM 'COMMON PATH' ALLOWED: 100% FIRE SPKLR	100'-0"
MAXIMUM 'COMMON PATH' FOR THIS PROJECT =	NFPA 30.2.5.3.1 / 35'-0"
MAXIMUM 'DEAD END' ALLOWED:	50'-0" GROUP B 100'-0" GROUP S-1 48' GROUP B
MAXIMUM 'DEAD END' FOR THIS PROJECT:	
MINIMUM CORRIDOR / EGRESS AISLE WIDTH REQUIRED: (for AREAS WITH GREATER THAN 50 OCCUPANTS)	44"
MINIMUM AISLE WIDTH REQUIRED: (for AREAS WITH LESS THAN 50 OCCUPANTS)	36"
TABLE 6.1.1.4.4.1 (B) REQUIRED SEPARATION OF OCCUPANCIES: BETWEEN GROUP B & GROUP S-1 = 1-HOUR WITH AUTOMATIC FIRE SPRINKLERS.	
FIRE EXTINGUISHERS REQUIRED: (1 F.E. PER 2,500 S.F.)	33,060 S.F. / 2,500 = (14) REQUIRED
NO GREATER THAN 75' APART	
NO. OF FIRE EXTINGUISHERS PROVIDED: = (11) 1ST FLR (4) 2ND FLR= 15 TOTAL	

INDICATES 1 HR. FIRE RATED WALL

INDICATES 2 HR. FIRE RATED WALL (STAIRS AND ELEVATOR)

EGRESS AISLE:
INDICATES REQUIRED MEANS OF EGRESS

NOTE REFER TO ENLARGED LS DRAWINGS FOR
EMERGENCY LIGHTS AND FIRE EXTINGUISHERS

Fire Sprinkler Drawings:
REFER TO FIRE SPRINKLER DRAWINGS PROVIDED BY SUBCONTRACTOR

CONSULTANT

STATE OF FLORIDA
REGISTERED ARCHITECT

Gregory B. Molina
FL REG. # AR 93354
DATE: 04-02-2024

COPYRIGHT © 2024 GBM ARCHITECTURE, PA
ALL RIGHTS RESERVED. THIS DOCUMENT
REPRODUCED IN ANY FORM WITHOUT
WRITTEN CONSENT FROM GBM ARCHITECTURE PA

GBM
ARCHITECTURE PA
ARCHITECTURE
MASTER PLANNING
AA26002322

330 HINMARSHREE STREET, SUITE 108
FORT LAUDERDALE, FLORIDA 33312
T : 9 5 4 . 9 9 9 . 5 6 3 3
C : 9 5 4 . 8 1 2 . 6 6 8 0
E: GREEM@GBMARCHITECTURE.COM
WEB: WWW.GBMARCHITECTURE.COM

Digitally signed by
Gregory B. Molina
DN: cn=US, st=Florida,
l=Fort Lauderdale,
serialNumber=AATL20
230831312648, ou=GBM
Architecture P.A.,
cn=Gregory B. Molina,
email=gregm@gbmarchi
tecture.com
Date: 2024.04.08
11:44:55 -0400

Gregory B. Molina

PORSCHE CHAMPION CENTER
GENERATION V
300 NW 24TH STREET
POMPANO BEACH, FL 33064
CITY OF POMPANO BEACH
BROWARD COUNTY

DRAWING ISSUE DATES.

SECOND FLOOR
OVERALL
LIFE SAFETY PLAN

SHEET
A-1.2
PROJECT 220802
DATE
PERMIT NO.

AAC
P223-12000033
05/07/2024